



**LITTLE
RED**

info@thelittleredcompany.com
www.thelittleredcompany.com
420 Brunswick Street, Fortitude Valley, QLD 4006

TECHNICAL SPECIFICATIONS

28 January 2025

Rachel Burke's

Fancy Long Legs

A production by The Little Red Company, La Boite Theatre and Brisbane Festival

Adapted for the stage by Naomi Price

Original songs by Waveney Yasso

Directed by Courtney Stewart

Set & Costume Designer	Rachel Burke
Lighting Designer	Teegan Kranenburg
Sound Designer	Brady Watkins
Arrangements/Music Direction	Alex Van den Broek
Access Consultant	Madeleine Little
Education Consultant	Annette Box
Company Stage Manager	Angela Ponting, 0439 793 567

Original Cast

Fancy	Mia Lierich
Charlotte	Tim Carroll
Incy	Irena Lysiuk
Busy	Kate Yaxley

DOCUMENT SUBJECT TO CHANGE

*The following document sets out the technical requirements and support required to stage **Fancy Long Legs**. Please contact us discuss any issues or concerns.*

Note: these specifications are based on the original season and are subject to change during remount.

Additional documents to be provided separately:

- Production Schedule (venue specific)
- Floor plan
- Custom Lighting plan
- Risk Assessment
- FOH Information sheet



LITTLE RED

info@thelittleredcompany.com
www.thelittleredcompany.com
420 Brunswick Street, Fortitude Valley, QLD 4006

ABOUT THE SHOW

Underneath a crafter's cart lived a lively young arachnid. Fancy Long Legs was her name, and she was easily distracted.

Fancy Long Legs is a brand-new glittery and vibrant musical adventure for children, based on a new picture book by Brisbane's international tinsel and craft icon, **Rachel Burke**.

Fancy Long Legs is the story of Fancy, a spider who loves to create but struggles to stay focused on her creative task of web-building. With the support of her spiderling friends, Fancy goes on a beautiful journey of self-discovery to find her own style and make something no one else can.

This uplifting story takes a sparkly and relatable look at neurodivergence, offering a playful and glitter-covered adventure of acceptance, staying true to yourself and finding friends who love you and celebrate your differences.

Fancy Long Legs is a ground-breaking fully accessible work for young audiences and the young at heart created to ensure the theatre experience is welcoming, safe and inclusive for all. Join Fancy on this must-see adventure of acceptance, staying true to yourself, celebrating differences and harnessing your inner fanciness!

PERFORMANCE OVERVIEW

FOH

Recommended for ages 3 – 100+ years.
Duration 50 minutes (no interval).
Relaxed performance, latecomers welcome
Photography permitted, no flash
Video not permitted until the end song

CONTENT WARNINGS

Contains theatrical lighting and effects, haze, and music.
All shows are relaxed performances.

ACCESS

Each performance in the season will be considered 'relaxed' with flexible venue access, ambient lighting, spoiler sheets, sensory warnings, a low-sensory space and accessible seating. Auslan Interpretation, audio description and tactile tours can be offered for select performances.

TOURING PERSONNEL

4x cast (Fancy, Busy, Charlotte, Incy)
1x Company Stage Manager
1x Assistant Stage Manager
1x Audio Operator
Venue Crew Required (mechs, floor sound, floor LX)



LITTLE RED

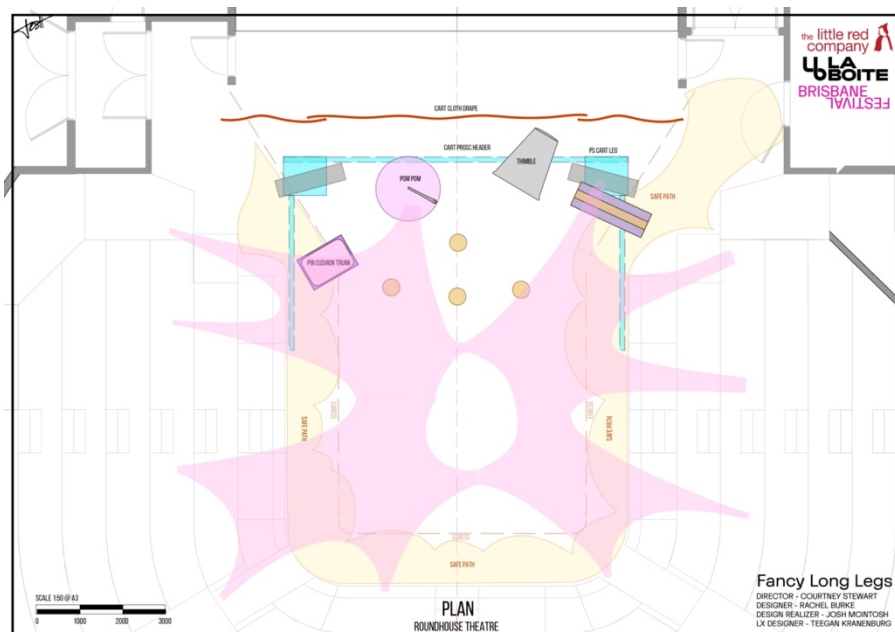
info@thelittleredcompany.com
www.thelittleredcompany.com
420 Brunswick Street, Fortitude Valley, QLD 4006

STAGING/SET

General Set Description and photos

Set consists of:

- Back curtain
- Oversized crafter's cart legs
- Oversized pom pom with needle and thread
- Oversized thimble
- Oversized embroidery hoop (on wheels)
- Oversized pin cushion box with pins
- 4x bobbin shaped stools
- Large web (stored in pin cushion and revealed at end of show)





VENUE REQUIREMENTS

- **General Stage Dimensions**
 - o Our first production was done in thrust, approx. 8m wide by 10m deep. We can adapt for proscenium arch.
 - o Legs and borders to be provided by venue
 - o Production requests that backstage and loading dock are clear from the commencement of Bump In
 - o The craft cart set piece is not adaptable, it is 6m high by 8.6m wide
- **Proscenium Dimensions**
 - o Minimum 9m wide, 12m preferable
- **Loading Dock**
 - o Big enough for a 12 tonne truck to have clear access
 - o Access to the loading dock must be level and without any obstacle. Preference for loading dock to be at stage level
- **Stage Surface**
 - o Floor must be clean and level
 - o We must be able to anchor our oversized pom pom and thimble set pieces to the floor for safety, as actors climb on these pieces.
- **Flying System**
 - o Back curtain 10m wide, 6m high, approx. 20 kilos
 - o Fancy's web approx. 35 kilos, shape and how it will be rigged to be determined venue to venue
- **Rigging Requirements**
 - o Back curtain
 - o Fancy's web
 - o Craft cart legs need to be rigged for stability
 - o We used DMX controlled winches in our original production, the same effect could be achieved with rope and pulleys
- **Access Equipment**
 - o The venue is expected to supply suitable access equipment which must be in full working order (ie Lifter)
- **Masking**
 - o All masking provided by venue and in place prior to scheduled bump in.
 - o Venue standard configuration of black borders
 - o Configuration of legs as per hanging plot
- **Storage**
 - o There must be sufficient room for storage of the production's props cases, tool crates etc, or within close proximity of the stage area. If storage is not available, parking for truck should be easily accessible from the stage.
- **FOH Control position**
 - o Audio position
 - o Stage Manager position
 - o Lighting position



LITTLE RED

info@thelittleredcompany.com
www.thelittleredcompany.com
420 Brunswick Street, Fortitude Valley, QLD 4006

- Comms

Talkback communication - Roaming comms

- Stage Manager
- Assistant Stage Manager
- Audio ops (FOH)
- All mechs

FOH/FOYER ACTIVATIONS

- A room close to the theatre that can be used as a Low Sensory Zone, with low lighting, soft and comfortable furnishings and a live feed of the show.
- Sparkly pathway leading from Low Sensory Zone to Theatre – can be achieved with removable adhesive dots
- Company will provide media wall, foyer tinsel and 'Fancy' neon sign





LITTLE RED

info@thelittleredcompany.com
www.thelittleredcompany.com
420 Brunswick Street, Fortitude Valley, QLD 4006

LIGHTING

Company to supply

- Custom lighting plan
- Show operator (stage manager)
- Show file

Venue to supply

- Floor LX technician
- ETC Lighting console
- LX operator for bump-in/tech only
- All fixtures as per custom lighting plan

AUDIO

Company to supply

- Audio operator
- QLAB file and show laptop

Venue to supply

- Floor sound technician
- FOH PA/sound system
- Sound console
- Venue to supply 4 x DPA or similar hairline mics
- Cast foldback onstage
- Any standard stage monitoring/CCTV cameras and standard comms





LITTLE RED

info@thelittleredcompany.com
www.thelittleredcompany.com
420 Brunswick Street, Fortitude Valley, QLD 4006

SCHEDULE INFORMATION

Pre-Rig

Pre-rig will be required prior to company arrival.

Bump In

- Venue to provide 4x Lighting crew, 2x Sound crew, 4x Mechs (incl. rigger/flyman, depending on agreement of web placement in venue)

Bump Out

- Venue to provide 4x Lighting crew, 2x Sound crew, 4x Mechs

Special Performance Conditions

- House lights always remain on, dimmable controls preferred

Risk Assessment to be provided.

COSTUMES

Facilities Required

- Washing machine and dryer
- Drying hot box (if possible)
- Hand-washing facilities for delicate items (clean sink/buckets)
- Drying racks
- Steamer
- Iron and Ironing board

Wardrobe Maintenance

- Company to tour with all costumes, accessories and shoes.
- Company will maintain and repair all costumes

PROPS AND FURNITURE

A number of handheld props are used by the cast.

- 2x props tables 2m x 1m
- Company will maintain and repair all props
- Vacuum cleaner, broom, mop and dustpan and brush to be supplied by venue

BOH SPACE REQUIRED

- Minimum 2 x climate-controlled dressing rooms for cast with sufficient seating
- Production office
- Wardrobe area with access to washer and dryer suitable for costumes
- Sufficient lighting and mirrors for make-up application
- Toilet facilities separate to those used by patrons/public

HOSPITALITY RIDER

- Hot water (kettle or boiler)
- Filtered drinking water
- Tea and coffee making facilities
- Access to a microwave and fridge