



PLAYLAB THEATRE

H O R I Z O N

BY MAXINE MELLOR

PRESENTERS PACK

"Horizon is a disturbing interrogation into what walks amongst our society. Horizon is a must-see. If you've already seen it, Horizon is a must rewatch. Horizon is a production operating at its rawest, most tender form. But most of all, Horizon is unabashedly Australian theatre. If this revival adds to any of that, then it is unabashedly a masterwork. See it immediately."

– HARRISON MILLS, THEATRE HAUS



CONTENTS

About Playlab Theatre	5
<i>Horizon</i> by Maxine Mellor	7
Production Specifics	8
Marketing	9
Digital Assets	9
Print Assets	9
Show Copy	10
Quotes & Reviews	11
Audience Engagement	12
Workshops	12
Technical Specifications	13
Example Schedule	13
Staging & Freight Notes	14
Wardrobe	14
Sound	15
Lighting	15
AV	15
Cost Estimates	16
Contact Details	17
Appendix	18
Appendix A: Setting Plan	18
Appendix B: LX Plan	19
Appendix C: LX Magic Sheet	20
Appendix D: Speaker Plan	21



Production & Rehearsal Photography by Cory Bradshaw and Eric Hart | Promotional Photography by Morgan Roberts.



"Horizon is a five-star triumph, a must-see for theatre lovers, fans of Australian writing, and anyone who appreciates top-notch theatre. This production stands as a testament to the power of storytelling and the brilliance of its creative team."

– JAKE GOODALL, DRAMA DISPATCH

Playlab Theatre is a Brisbane-based, multi award-winning theatre company that seeks to challenge perspectives of Australian Culture through Australian Theatre. As a new-writing theatre, we privilege making high quality, adventurous work that speaks to the diversity and politics of contemporary Australia and appeals to audiences across the country seeking work of substance.



AUSTRALIAN THEATRE AUSTRALIAN CULTURE

With playwrights at the centre of the creative process, we provide a nuanced, but rigorous pathway to develop a work from inception to rehearsal readiness and reach its potential, before producing and publishing the work for audiences to engage with. At any given time we have at least three commissioned works on the slate, undergoing development, each aimed at bringing under explored stories to a wide range of audiences.

More information on Playlab Theatre can be found here: playlabtheatre.com.au. Set in the red-earth outback of regional Australia, *Horizon* by Maxine Mellor is an AWGIE award winning work, evoking the thrill of Max Max and the suspense of Wolf Creek. It is a play that will have audiences on the edge of their seats by being programmed into your venue and/or season.



THE PRODUCTION

INFORMATION

ARTFORM	Text-based Theatre
STYLE/GENRE	Australian Gothic, Cinematic Theatre
THEME	Toxic Masculinity, Regional Australia

CREATIVES



PLAYWRIGHT
Maxine Mellor



DIRECTOR
Ian Lawson



VIDEO DESIGN
Nathan Sibthorpe



SOUND DESIGNER
Guy Webster



LIGHTING DESIGN
David Walters

CAST



Sky
Ashlee Lollback



Cole
Julian Curtis



H O R I Z O N

BY MAXINE MELLOR

***Nothing like hitting the road
to leave your troubles behind.***

With the horizon ahead of them, Cole and Sky drive into the guts of the country in search of freedom. Cole's dad is sick, Sky is bored of the corporate ladder, and so they're excited to hit the road and leave their problems behind.

Their newfound freedom is underscored by a long-forgotten mix tape buried deep in the glovebox, but out of the static emerges the past. When secrets start to leak from the car, dingoes begin to stalk them, and the bush seems more haunting than before. The road trip games aren't fun anymore.

Horizon keeps who we are in the rear-view mirror and asks us what it is we can see in the heat-distorted bitumen ahead?

PRODUCTION SPECIFICS

DURATION

90 minutes, no interval.

CONTENT WARNING

Suitable for 16+. Contains course language and adult themes, including references to sexual assault.

PRESENTING LINE

A Playlab Theatre production presented in partnership with [venue name].

MANDATORY ACKNOWLEDGEMENT

The following acknowledgment text must be included on all materials.

A Playlab Theatre Production in partnership with [venue name]. Playlab Theatre and this project is supported by Queensland Government through Arts Queensland.

SUITABLE VENUES

Horizon by Maxine Mellor is best suited to a black box or proscenium arch venue with an audience capacity of between 150 – 400.

MAXIMUM NUMBER OF PERFORMANCES PER WEEK

6-8 performances

MINIMUM BREAK BETWEEN PERFORMANCES

240 minutes.

TOURING AVAILABILITY

Horizon by Maxine Mellor is available for touring from 2025.

TOURING PERSONNEL

The touring party consists of 3 people.

NAME	ROLE
Julian Curtis	Cole
Ashlee Lollback	Sky
Mikayla Hosking	Stage Manager

FOR ALL MEDIA ENQUIRIES PLEASE CONTACT

Marketing Coordinator.

marketing@playlabtheatre.com.au



MARKETING

SUMMARY

A comprehensive library of digital and physical assets including marketing collateral, templates, production shots, promotional images, artist interviews and video footage, will be shared with our presenting partners.

Please note that all marketing materials including print (posters, flyers, press advertising), broadcast and digital (website, emails) require approval before being published or sent to print. Approvals should be sent to marketing@playlabtheatre.com.au. Please allow for **minimum 2 business days** turn around on all approvals.

DIGITAL & PRINT ASSETS

These are sample digital and print assets from *Horizon's* 2024 Brisbane Season. Please contact marketing@playlabtheatre.com.au to coordinate updated marketing materials.

AVAILABLE ASSETS



[Cast Interviews](#)



[Production Photography](#)



[Press Release](#)



[Reviews](#)



MARKETING

SHOW COPY

ONE LINER

Nothing like hitting the road to leave your troubles behind..

SHORT SYNOPSIS

With the horizon ahead of them, Cole and Sky drive into the guts of the country in search of freedom. When secrets start to leak from the car, dingoes begin to stalk them, and the bush seems more haunting than before. The road trip games aren't fun anymore.

SHORT SYNOPSIS ALTERNATE

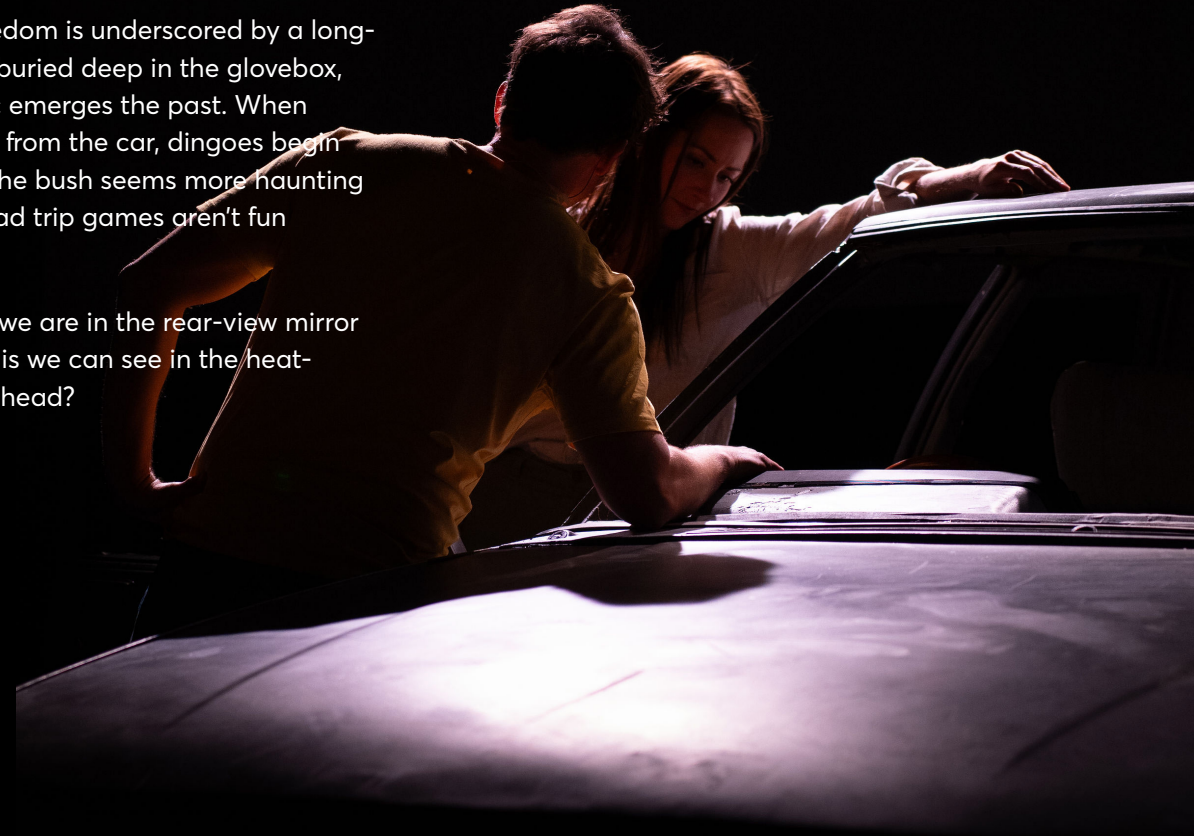
A young couples road trip into the Aussie outback isn't as idyllic as they thought it would be. Horizon keeps who we are in the rear-view mirror and asks us what it is we can see in the heat-distorted bitumen ahead?

EXTENDED SYNOPSIS

With the horizon ahead of them, Cole and Sky drive into the guts of the country in search of freedom. Cole's dad is sick, Sky is bored of the corporate ladder, and so they're excited to hit the road and leave their problems behind.

Their newfound freedom is underscored by a long-forgotten mix tape buried deep in the glovebox, but out of the static emerges the past. When secrets start to leak from the car, dingoes begin to stalk them, and the bush seems more haunting than before. The road trip games aren't fun anymore.

Horizon keeps who we are in the rear-view mirror and asks us what it is we can see in the heat-distorted bitumen ahead?



MARKETING

MEDIA QUOTES

"The audience's reactions throughout the performance—from nods of recognition to audible gasps—are a testament to the play's gripping narrative and emotional depth. Horizon is more than a captivating theatrical performance; it is an experience that challenges the audience to confront the unsettling complexities of identity, relationships, and the darkness that lies within."

SAMANTHA HANCOCK, STAGEBUZZ BRISBANE

"Horizon is a high-octane exploration of the Australian political landscape, pushing the audience to confront their own morals, ethics, and judgments. Mellor's script weaves together poetry, realism, and gothic themes with masterful precision, making it a thought-provoking experience for Southeast Queensland audiences."

JAKE GOODALL, DRAMA DISPATCH

"Horizon was thrilling and unnerving, an atmospheric journey that wove modern social commentary into a well-established genre and was made frighteningly believable by the sharp writing and skilled actors."

ELISE LAWRENCE, BACKSTREET BRISBANE



AUDIENCE RESPONSE

"I think need more theatre like this...it's an amazing piece of theatre that grips you and never lets you go...very deeply moving."

"You don't know what is going to happen next and you really want to find out."

"It's so wonderful to see such energetic, passionate, brilliant, driven work."

"I was on the edge of my seat for the entire play, you have got to come see this."

"Just go see it."

"5 Stars!"



AUDIENCE ENGAGEMENT

OVERVIEW

Audience engagement activities and products can be arranged through Playlab Theatre including: post-performance discussions, hardcopy publications sales, workshops and artist interviews.

WORKSHOPS

The creatives can deliver online or in-person acting, directing, playwriting or technical theatre workshops. The workshops are suitable for community and creative arts groups and can be tailored to beginners, intermediate or experienced participants. Please contact the Producer at production@playlabtheatre.com.au to discuss options and costs.

POST-PERFORMANCE DISCUSSIONS

Post-performance discussions enable the audience to engage with the actors and creatives through a Q&A format. To arrange a post-performance discussion, please contact the Producer at production@playlabtheatre.com.au.

PUBLICATION

The *Horizon* script is available as a hardcopy publication and can be arranged for sale in the foyer on consignment.

As well as a more extensive catalogue of Australian Gothic, Cinematic Theatre, Regional set works or works for Young People. Please contact the Publication Manager at info@playlabtheatre.com.au to discuss further.



TECHNICAL SPECIFICATIONS

TECHNICAL SUMMARY

The following section outlines the technical requirements and support to be provided by the touring company and by the venue. Sites and circumstances may differ and we welcome suggestions or solutions from venues. Playlab Theatre welcomes the opportunity to discuss this directly.

CREW REQUIRED FROM VENUE

Venue to supply:

BUMP IN/BUMP OUT
3x Mech 3x LX 1x SND/AV
SHOW
1x LX/SND/AV Technician (Sound Operator)

PERSONNEL REQUIRED FROM PLAYLAB THEATRE

TOURING
2x Performer 1x Stage Manager (Board Operator)

EXAMPLE SCHEDULE

Pre-rig booms and overhead lights and audio recommended.

TECHNICAL PERSONNEL	PRODUCTION SCHEDULE
DAY 1	
1x Company Tech 1x SND/AV 3x LX 3x MX	<ul style="list-style-type: none">• Rig LX• Lay Show Desk• Bump in car and revolve• Build LX Booms• Bump in screens• Sound and AV install• Sound Focus and Checks• Projector Focus
DAY 2	
1x Company Tech 1x SND/AV 2x LX	<ul style="list-style-type: none">• LX Focus• Tech Plot• Tech/Dress Rehearsal
DAY 3	
1x Company Tech 1x SND/AV 1x LX	<ul style="list-style-type: none">• Tech Hold• Matinee (Optional)• BREAK• Show

TECHNICAL SPECIFICATIONS

LIGHTING

Booms and overhead rig can be pre-rigged, patched, coloured and flashed out prior to full company arrival and with the assistance of the Company supplied technician (see Appendix B: LX Plan).

Playlab Theatre to supply:

- Lighting Plan
- MacBook Pro running QLAB 4 and show files.
- 4 x ACME XA-400 spot (at additional cost)
- Car LX – Dimmable LEDs, Birdies, Car Headlights, Taillights/Brake Lights, Indicators/Emergency Lights.

Venue to supply:

- 4 x ACME XA-400 spot (option to be supplied by Playlab Theatre) or equivalent moving spots
- 8 x ACME Aurora Wash
- 11 x Colour Source Jr 25/50 Zoom
- 7 x 26' Source 4WRD
- 4 x 36' Source 4WRD
- 24 x 25-50 Source Four J
- 8 x Sel Rama 1.2KF
- 8 x Sel 1.2KF
- 9 x Chauvet F-415FC
- 8 x S4 PAR NSP
- 8 x Boom Location

AV

This show utilises two identical projectors for front projection of images onto the two screens for the duration of the show. A third projector is mounted at the back of the stage to create an affect wit haze (see Appendix B: LX Plan).

Playlab Theatre to supply:

- 1 x MacBook Pro running QLAB 4 (containing all the master video files/ audio files and cues)
- 2 x Projectors – minimum brightness 12000 Lumens (12 K) with an inbuilt shutter (or alternatively a DMX operated shutter)

Venue to supply:

- 1 x Projector – minimum brightness 7000 Lumens (7 K) with an inbuilt shutter (or alternatively a DMX operated shutter)
- Projector Cables

SOUND

The sound design utilises four speakers rigged overhead, two subs positioned upstage and a left and a right pair of monitors on the floor and two speakers inside the car (see Appendix C: Speaker Plan).

Playlab Theatre to supply:

- 2 x Headset Mics
- 1 x Macbook Pro running QLAB 4
- All master audio files and cues
- 1 x Netgear 5 Port Gigabit Switch
- Ethernet cables
- 2 x battery powered speakers mounted inside the car.

Venue to supply:

- 1 x 8-Channel minimum sound interface
- 4 x UPJ-1P
- 2 x Subs
- 4 x Martin LE100
- Audio console
- All appropriate patching, cabling, isolated power and driver

TECHNICAL SPECIFICATIONS

STAGING

The set is designed to fit within a proscenium arch or black box style theatre with the audience in front of the stage.

Performance Floor Area: 9.6mW x 7.2mD

Stage needs to allow 1m at the back of the screens. The minimum stage depth is 9.4m. The stage width needs to allow for the side lighting in the wings (see Appendix B: LX Plan) and take into consideration the audience sightlines in the theatre.

ACCESS

The car set piece requires certain access into the theatre. The car is transported to the theatre on its side with the following dimensions:

Car Set Piece: 1420mmW x 1800mmH x 3600mmL

Playlab Theatre to supply:

- Show floor 24 pieces of ply (1.2mH x 2.4mW x 18mmD)
- Two projection screens (3.66mW x 1.050-2.09mH) with stands (French braces).
- Car set piece built to tour. Car is transported in pieces and assembled on stage.
- Car revolve is transported with car set piece. Revolve is operated by the technician of the touring party.
- Props (car keys, cassette tapes, blood, mobile phone, wet wipes, vomit, bags, tyre iron, ring and box).

FREIGHT NOTES

For a tour within Australia the set can be transported in an 8 Tonne Truck with a tailgate lift. Truck hire and driver will need to be included in touring costs. Access to a loading dock is required.

CRITICAL ISSUES

This production requires specific access into the theatre. The car set piece is transported on its side.

WARDROBE

Playlab Theatre to supply:

COLE

- 2x T-Shirts
- 1x Pair of Shoes
- 1x Jeans

SKY

- 2x T-Shirts
- 1x Pair of Shoes
- 1x Jeans

Venue to supply:

- 2 x Dressing Room
- Costume rack and coat hangers
- Access to showers, toilet, drinking water
- Sufficient backstage lighting, tables, chairs, bins, mirrors
- 1 x Secure, lockable production office/area

COST ESTIMATES

REMOUNT COST

AUD \$17,925

WEEKLY COST

AUD \$11,170

Please note that this production is available as a weekly hire only

ROYALTIES

14%

NB: This budget does not include touring costs such as freight, touring allowance, accommodation, and travel costs.



A man and a woman are posing playfully against a blue background with red lighting. The man is in the foreground, wearing a white t-shirt and blue jeans, making a peace sign with his right hand. The woman is behind him, also in a white t-shirt and blue jeans, looking at the camera with a playful expression.

CONTACT

PRODUCER CONTACT

(07) 3220 2763

production@playlabtheatre.com.au

MARKETING CONTACT

(07) 3220 2763

marketing@playlabtheatre.com.au

WEBSITE & SOCIALS



playlabtheatre.com.au



[@playlabtheatre](https://www.facebook.com/playlabtheatre)



[@playlab_theatre](https://www.instagram.com/playlab_theatre)

OFFICE LOCATION

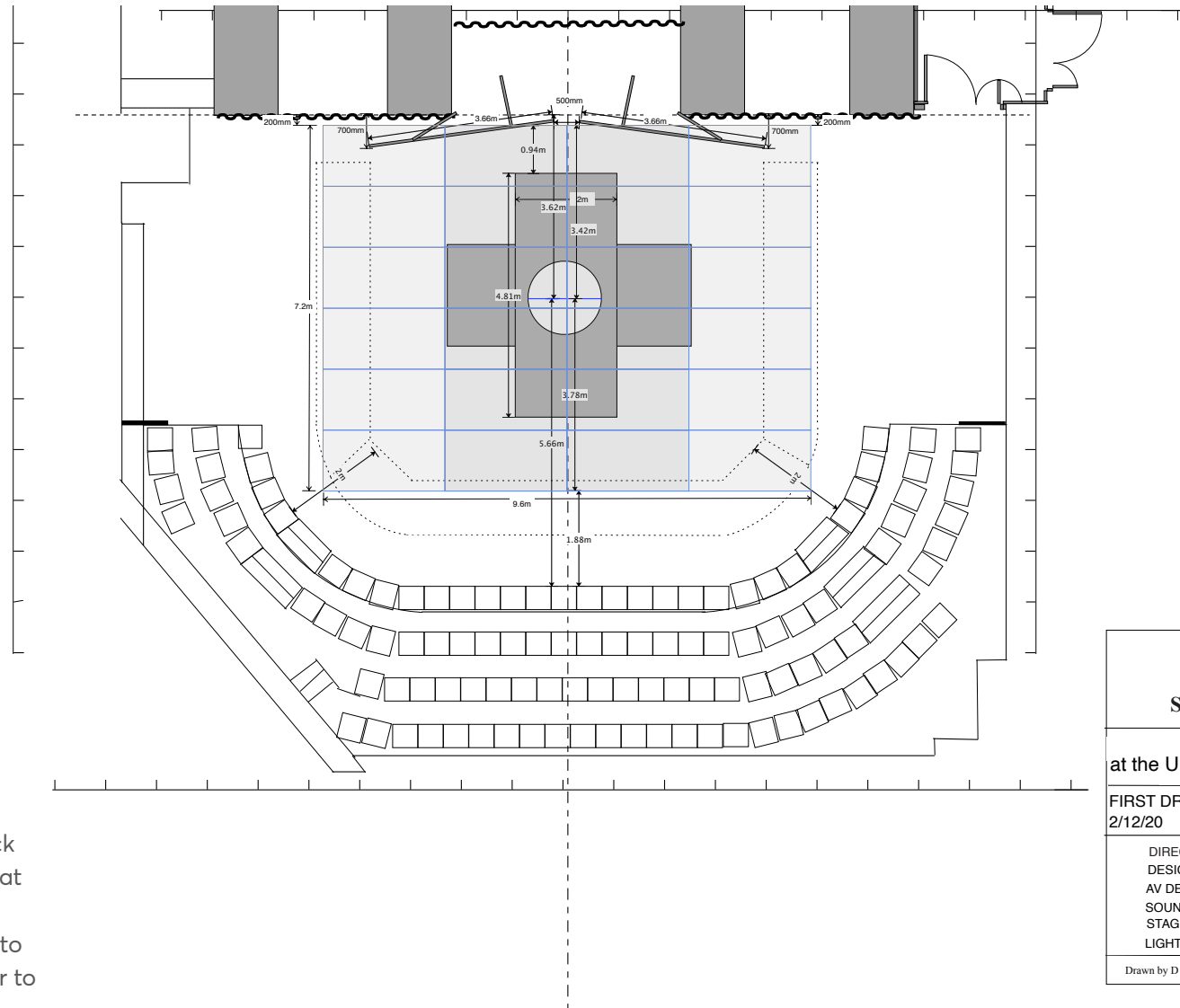
King George Chambers,
156 Roma Street, Brisbane City
QLD 4000

POSTAL ADDRESS

PO Box 3701
South Brisbane,
Brisbane City, QLD 4101

APPENDICES

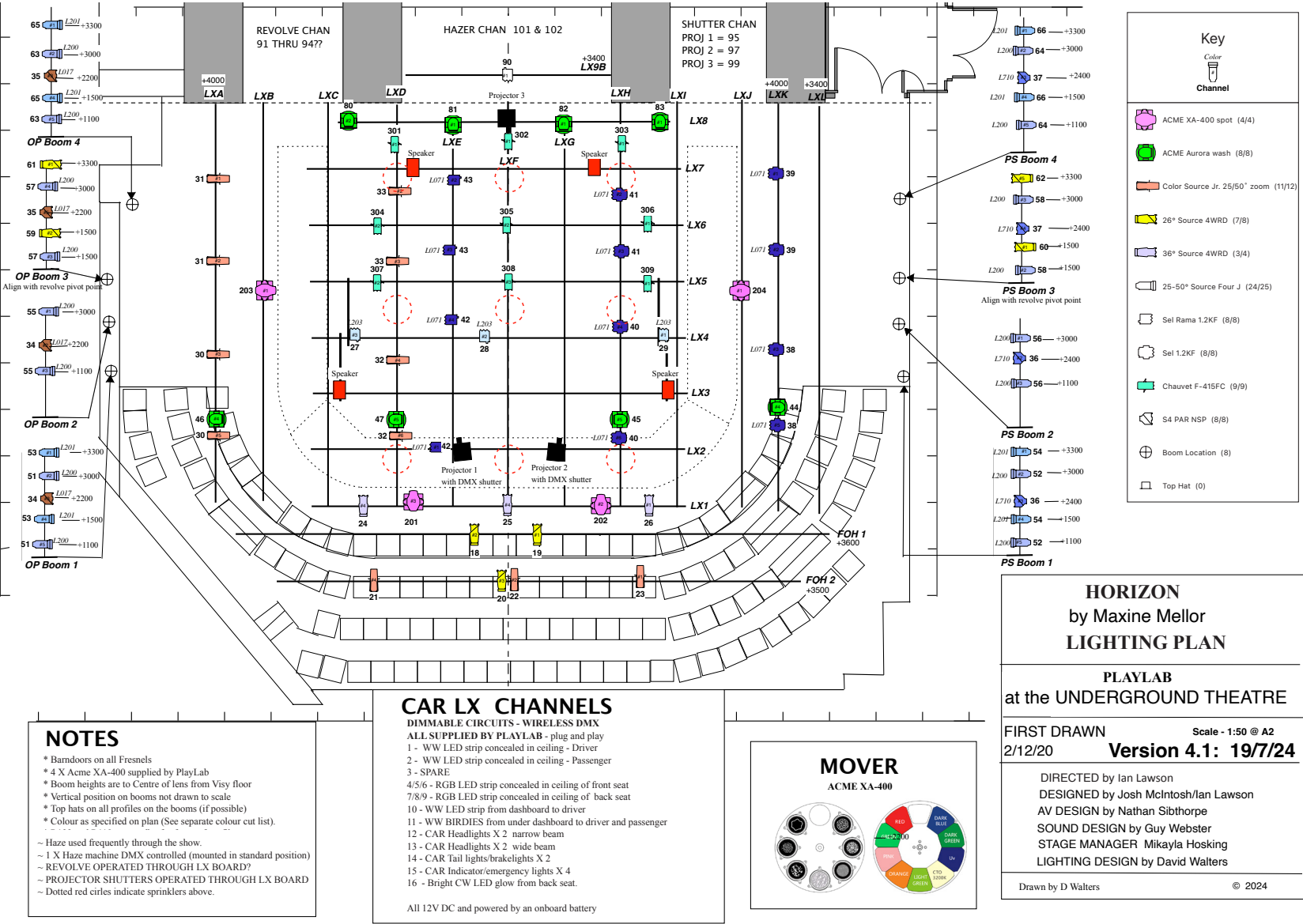
APPENDIX A - SET PLAN



The plans for *Horizon* included in this pack are specific to the Underground Theatre at Brisbane Powerhouse. Please note these plans are not to scale, please contact us to discuss the specifics of your venue and/or to access the actual plans on: production@playlabtheatre.com.au.

HORIZON by Maxine Mellor SETTING PLAN	
PLAYLAB at the UNDERGROUND THEATRE	
FIRST DRAWN 2/12/20	Scale - 1:50 @ A2 Version 4.1: 19/7/24
DIRECTED by Ian Lawson DESIGNED by Josh McIntosh/Ian Lawson AV DESIGN by Nathan Sibthorpe SOUND DESIGN by Guy Webster STAGE MANAGER Mikayla Hosking LIGHTING DESIGN by David Walters	
Drawn by D Walters	© 2024

APPENDIX B A- LX PLAN



APPENDIX C - LX MAGIC

- 1 -

HORIZON – MAGIC PLAYLAB @ THE UNDERGROUND JULY 2024

GROUP 101 CAR LX

- 1 - WW LED strip in ceiling - driver
- 2 - WW LED strip in ceiling - Passenger
- 3 - SPARE
- 4 - Red LED strip in ceiling of front seat
- 5 - Green LED strip in ceiling of front seat
- 6 - Blue LED strip in ceiling of front seat
- 7 - Red LED strip in ceiling of back seat
- 8 - Green LED strip in ceiling of back seat
- 9 - Blue LED strip in ceiling of back seat
- 10 - WW LED strip from dashboard to driver
- 11 - WW BIRDIES to driver and passenger
- 12 - Car Headlights X 2 narrow beam
- 13 - Car Headlights X 2 wide beam
- 14 - Car Tail lights/brakelights X 2
- 15 - Car Indicator/emergency lights X 4
- 16 - Bright CW LED glow from back seat

- 18 L203 FOH to driver
- 19 L203 FOH to passenger
- 20 L203 FOH to windscreen

GROUP 1 Acting Area

- 21 L203 FOH to AA1
- 22 L203 FOH to AA2
- 23 L203 FOH to AA3
- 24 L203 FOH to AA4
- 25 L203 FOH to AA5
- 26 L203 FOH to AA6
- 27 L203 FOH to AA7
- 28 L203 FOH to AA8
- 29 L203 FOH to AA9

GROUP 2 Sunset

- 30 L776 Sunset key - high
- 31 L776 Sunset key - high
- 32 L776 Sunset key - high
- 33 L776 Sunset key - high
- 34 L017 Sunset key - low
- 35 L017 Sunset key - low
- 36 L710 Sunset fill - low
- 37 L710 Sunset fill – low

GROUP 3 Blue wash

- 38 L071 Deep blue fill
- 39 L071 Deep blue fill
- 40 L071 Deep blue fill
- 41 L071 Deep blue fill
- 42 L071 Deep blue fill
- 43 L071 Deep blue fill

16.8.2024

- 44 L710 DS lavender fill
- 45 L710 DS lavender fill
- 46 L200 DS cool fill
- 47 L200 DS cool fill

GROUP 5 Sidelight

- 51 L200 Blue DS corridor 1
- 52 L200 Blue DS corridor 1
- 53 L201 Diagonal corridor 2 DSOP
- 54 L201 Diagonal corridor 1 DS PS
- 55 L200 Blue DS corridor 2
- 56 L200 Blue DS corridor 2
- 57 L200 Blue CS corridor 3
- 58 L200 Blue CS corridor 3
- 59 OW Warm CS corridor Low
- 60 OW Warm CS corridor Low
- 61 OW Warm CS corridor High
- 62 OW Warm CS corridor High
- 63 L200 Blue US corridor 4
- 64 L200 Blue US corridor 4
- 65 L201 Diagonal corridor 1 USOP
- 66 L201 Diagonal corridor 2 USPS

GROUP 8 Backlight

- 80 OW OW backlight wipe
- 81 OW OW backlight wipe
- 82 OW OW backlight wipe
- 83 OW OW backlight wipe

- 90 OW Horizon light

- 101 Hazer
- 102 Hazer

GROUP 20

- 201 ACME XA-400 spot
- 202 ACME XA-400 spot
- 203 ACME XA-400 spot
- 204 ACME XA-400 spot

GROUP 30

- 301 LED Wash
- 302 LED Wash boot
- 303 LED Wash
- 304 LED Wash
- 305 LED Wash roof
- 306 LED Wash
- 307 LED Wash
- 308 LED Wash bonnet
- 309 LED Wash

PROJECTOR SHUTTERS

- 95 DS projector
- 97 US Pojector
- 101 - HAZE
- 102 - HAZE FAN

DAVID WALTERS LIGHTING DESIGN
MOBILE: +61 (0)412 131860 EMAIL: david.walters7@bigpond.com

APPENDIX D - SPEAKER

