



IDENTITY

An immersive, multilingual physical theatre journey through self and society

SHOW SYNOPSIS

Who we are is never just one story.

Four strangers are drawn into an undefined space where memory, perception, and reality intertwine. As they navigate this shifting landscape, fragments of their lives emerge—stories of displacement, cultural heritage, and the struggle for acceptance.

Through moments of tension, humour, and revelation, they uncover hidden connections and challenge the labels imposed upon them. Each must confront the question: Are we shaped by who we are, or by how others see us?

Identity is a theatrical journey through shifting perspectives, where personal histories collide, truths are questioned, and the search for belonging takes centre stage in an ever-changing world.

A poetic, multilingual physical theatre journey through self and society.



“

Navigating one's place in the world is never easy and it is made harder by the societal pressures of everyday life. Identity follows four talented performers as they move around an undefined space, at an undefined time, expertly weaving script, movement and dance to create immersive theatre.



Lachlan Boyes – Magic Ant Network

”



ABOUT D.I.V.E THEATRE COLLECTIVE

Based on the Sunshine Coast, D.I.V.E. Theatre Collective is a multicultural, physical, and contemporary ensemble that creates immersive, boundary-pushing productions. Blending movement, poetry, and visual arts, they design unique "no stage, no audience seats" experiences that challenge perceptions, stimulate reflection, and address socially relevant issues.

Their high-calibre work serves regional artists seeking development, school students, and diverse communities. To date, D.I.V.E. has built a vast audience reach across demographics through inclusive training programs, engagement activities, and accessible participatory performances.





ABOUT THE SHOW

ARTISTIC FRAMING

Identity is a contemporary, site-responsive immersive theatre experience that dismantles the traditional "stage-and-seat" divide.

Blending physical theatre, contemporary dance, visual art, and multilingual storytelling (English, Spanish, and Mandarin), this Matilda Award-nominated work serves as a poetic mirror to our rapidly shifting global landscape.

For presenters, *Identity* offers profound artistic relevance: it is a vital, cross-cultural exploration of how we define ourselves when social labels, personal histories, and diverse cultures collide.

AUDIENCE & COMMUNITY EXPERIENCE

Total Immersive Impact: There's no stage or traditional seats. Audiences actively step into the performance space, standing face-to-face with a diverse cast. They become an active part of the show.

Core Themes: belonging, cultural friction, perception, and the fragile nature of personal versus collective self.

Deep Community Connection: The show's multilingual and accessible nature naturally draws in multicultural communities, school groups, and contemporary arts patrons. It bridges cultural divides by inviting viewers into a shared, visceral human experience.

THE TEAM



CESAR GENARO

Director

Co-founder of D.I.V.E., with Brazilian roots and global experience. Specialises in Physical and Political Theatre, directing acclaimed, boundary-pushing productions.



PRISCILA DA CUNHA

Dramaturg
Production Manager

Co-founder, Brazilian-born, Priscila has been shifting cultural landscapes for 15 years through high-impact, contemporary performing arts experiences.



VALENTINA AYALA

Performer

Colombian-born actress and dancer trained in hip-hop, Latin, and contemporary styles, bringing vibrant energy and cross-cultural storytelling to Identity.

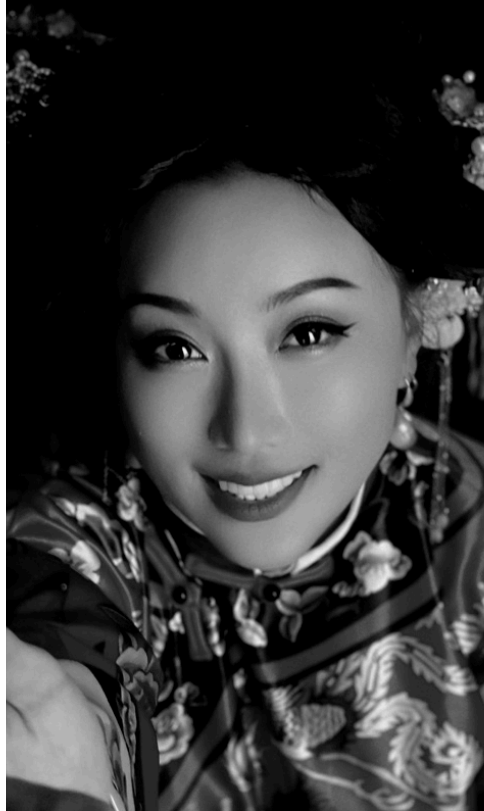
THE TEAM



MEGAN O'HARE

Performer
Education Officer

Irish-born artist and educator driving D.I.V.E.'s productions and community initiatives through powerful performance.



BELLA WANWEI LIU

Performer

Chinese-born choreographer, dancer, and educator with 15+ years' experience. She brings flair and diverse cultural expertise to *Identity*.



WANRONG LIU

Performer

Versatile Chinese choreographer and multimedia artist blending design with performance. She brings cross-cultural vision to *Identity*.

“

Theatre's masterful incorporation of audience participation reminds us that despite feeling isolated, we all grapple with labels and identity in different ways and capacities. Identity reminds us that beneath surface differences, we can discover profound commonalities. Audiences leave with a deepened sense of community, understanding that we're not as separate as boundaries and labels might suggest. Identity proves that connection transcends face value – we are not so different after all!

★★★★★

Review by Georgia Haupt –
[Anywhere Festival](#)



IMPACT

AUDIENCE REVIEWS



“ It was insightful, emotional, and pulls right where it's meant to.

“ It was topical and relevant in a world that demands conformity and homogeneity.

“ It was interactive and original. An awesome experience.

“ I loved the lighting, the use of space and the unique audience engagement.

“ I loved the immersion and the movement around the room.



TARGET AUDIENCE

Art Form Focus: Fans of contemporary physical theatre, dance, spoken word, and immersive live art.

Key Demographics: High school students/teachers (15+) and a broad adult cohort aged 21 to 65+.

Diversity & Segments*: Deeply connects with CALD communities (25%) and core venue subscribers (41% Essence, 28% Expression).

**Segment data categorised utilizing Morris Hargreaves McIntyre (MHM) Culture Segments.*

PARTICIPATION STATS

Event Acclaim: Rated "Excellent" or "Very Good" by the vast majority of regional patrons.

Immersive Response: Overwhelmingly praised for its close-up staging and "unforgettable" storytelling.

Community Impact: Proven to strongly increase cultural diversity awareness and strengthen community arts connections.



“

The engaging questions and interactive nature called my attention. It was a very thought-provoking concept - important questions at this moment in time.

★★★★★

Audience Review





TOUR AVAILABILITY

From August 2027

DURATION

80 minutes (no intermission)

CAPACITY

100 people

SUITABLE VENUES

- Theatres (black box / arena)
- Community venues & studio spaces
- Festivals & non-traditional spaces

EXAMPLE SCHEDULE

- Bump In & Tech: 4-6 hours
- Performance: 70-80 minutes (no intermission)
- Bump Out: 2 hours

SCALING & ADAPTABILITY

Identity is a 4-actor show designed to be flexible and scalable depending on the facilities available.

The ideal set up for *Identity* is in a space in which the audience members share the performance space with the actors and are free to move around during the show. Audience members stand around the performers. There is no stage or audience seats (unless required for elderly and disabled patrons).

D.I.V.E. performers can hold a main-stage theatre space as well as deliver a beautifully intimate performance in less traditional performance spaces.



AUDIENCE ENGAGEMENT

OPPORTUNITIES AVAILABLE

We can provide a range of audience engagement experiences alongside with the production

Q&A: Post-show discussions with performers and the director to explore themes and artistic methods.

Performance Workshops: Hands-on sessions in Physical Theatre, Devising, Contemporary Performance, and Theatre of the Oppressed.

Movement & Creative Writing: Practical workshops exploring D.I.V.E.'s process using guided movement and writing exercises.

High School Students: Ideal for Years 9–12 Drama and English (covers non-linear/physical theatre). Teacher's resources available.

Community Engagement: Tailored programs exploring identity, belonging, and human connection, engaging CALD and local groups.

RESOURCES

FULL PRESENTER PACK

Detailed show information, audience engagement, technical rider.

[CLICK HERE](#)

MARKETING KIT

Full marketing toolkit: images, promo material templates, videos, marketing copy, media angles, audience profile.

[CLICK HERE](#)

IMAGES

A selection of high res images to download.

[CLICK HERE](#)

VIDEOS

Vox pops, interview with director & cast, rehearsal footage, show trailer.

[CLICK HERE](#)

IDENTITY WEBSITE

Show description, videos, photos,.

[CLICK HERE](#)

CONTACT US

PRODUCTION/ MARKETING

Priscila Da Cunha

Ph. 0490 158 065

priscila@divetheatre.com

EDUCATION OFFICER

Megan O'Hare

Ph. 0491 639 790

education@divetheatre.com

DIRECTOR / TOURING PRODUCTION MANAGER

Cesar Genaro

Ph. 0490 170 309

cesar@divetheatre.com

