

PRIMA



PRIMAL

Untamed Desires, Captivating Wonders: A Provocative Circus Inspired by the Animal Kingdom!

From the creators of Rouge comes Primal: sexy, funny, thrilling circus for grown ups featuring Australia's most exciting circus and cabaret artists

Spectacular acrobatics, breathtaking cabaret and song, scintillating dance, this non-stop wild ride of a show is a sexy circus cabaret that draws inspiration from the animal kingdom and natural world.

From the creators of

ROUGE



Highwire Entertainment

Meet the team behind the show!

We specialise in presenting the unexpected!

Since 2006, Highwire has grown to house a revered stable of award-winning shows, from new developments and community engagement, into high impact and commercially successful international touring. In a post-COVID Victorian circus sector landscape, Highwire has become Victoria's largest independent production house of critically-acclaimed circus, cabaret and family-friendly entertainment, with currently 35 artistic staff members across our programme of six shows.

Our full list of shows, current and past, include:
Primal, Rouge, The Defiant, Bon Appetit,
Dinosaur Time Machine, Shake It, PEEK,
Papillon, and Petit Circus.



PRIMAL

ABOUT THE SHOW

Untamed Desires, Captivating Wonders: A Provocative Circus Inspired by the Animal Kingdom!

From the creators of the critically-acclaimed adult circus cabaret *Rouge* comes *PRIMAL*: a non-stop circus-gone-wild ride that draws inspiration from the animal kingdom and natural world. Featuring Victoria's most exciting circus and cabaret artists, this new work will showcase spectacular acrobatics, breathtaking live music, scintillating dance, and the strong ensemble work Highwire is well-known for.

We wanted to make a show that celebrated some of the things you don't see on stage very often: neurodiverse artists, and artists with diverse body types. We know that representation matters, and when audiences are watching a 'sexy circus cabaret' and see only able-bodied, neurotypical artists of similar body types, it sends (intentionally or unintentionally)

a message about what "is or is not sexy" We want to subvert expectations, push boundaries, interrogate typicalities, and explore the diversity inherent in spectrums of gender and sexuality, while at the same time celebrating diversity in circus arts.

We wanted to provide space for the women on stage to be fierce, strong, and powerful, and to celebrate the male performers being vulnerable with each other. We wanted to show characters that are fully formed people that our audience gets to know throughout the show.

And we wanted to do this in a way that will be playful, joyful and inclusive, allowing audiences to feel welcomed into the show, while still offering alluring, sexy and salacious routines to delight.

CREATIVES:

Directed By
Elena Kirschbaum

Produced By
Highwire
Entertainment

Featuring
Sian Brigid
Jay Chasland
Tro Griffiths
Emily Loe
Kathryn O'Keeffe
Paul O'Keeffe

Designed By
April Dawson
Peter Karmel
Stephanie Mitchell



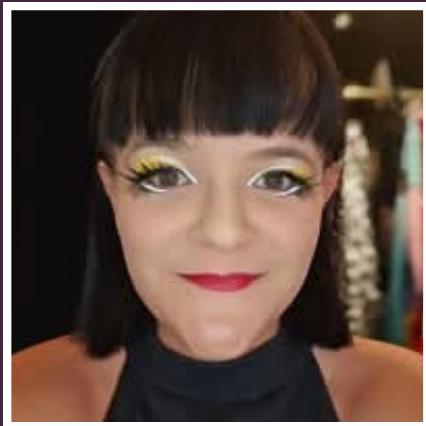
MEET THE TEAM



Elena Kirschbaum

Director / Producer

Elena Kirschbaum is a creative producer and director, specializing in art, community events, circus, and multi-artform performing arts. El has been creating shows for over fifteen years through her company Highwire Entertainment, and is the director behind critically acclaimed hit like Rouge, The Defiant, Papillon, Bon Appetit, Dinosaur Time Machine, So You Think You Can Drag, and The Blue Marquessa. Elena is also co-Director of Gluttony, one of the major hubs at the Adelaide Fringe, and 'festival within a festival' that attracts over 500,000 patrons over the one month that it runs annually.



Ciara Thorburn

Performer

Circus Artist, Producer, Variety Performer, Entertainer, Clown, Mouth Juggler, MC, Street Performer, Cabaret Luminary and human being. Ciara defies expectations in extraordinary ways, she has a knack for turning the mundane into the astonishing.



Leather Lungs

Performer

An award-winning entertainer, Leather Lungs is a graduate of the Wellington Performing Arts Centre. Career highlights include: performing with Adele, for The Beckhams, bringing the house down under his alter ego Leather Lungs, and winning two Best Cabaret awards at the Adelaide Fringe Festival for his solo cabaret 'Yas Queen!' He can be seen and heard on various television shows, and dozens of radio commercials and jingles. He was also a member of the Shakespeare Globe Centre, New Zealand Young Shakespeare company, and performed at the Globe theatre in London. He is working on creating new shows and a children's book.



Tro Griffiths

Performer

Tro is an Australian based circus and burlesque artist with a degree from the National Institute of Circus Arts to prove it. Tro has been performing for over 10 years to audiences across the country with a long list of sold-out shows and banging reviews. As a proud member of the LGBTQIA+ community they are always pushing the boundaries and expectations of what is "art". You may not get what you were expecting; but you will be entertained. A veteran of the fringe circuit yet still as youthful and supple as ever; you will be in safe hands with Tro on the stage.



Emily Loe

Performer

Em is an emerging circus artist specialising in bounce juggling and duo acrobatics, having just graduated in 2021 from the National Institute of Circus Arts. Before migrating to Melbourne to pursue acrobatics, Em boasted a committed and competitive gymnastics career from age seven back at home in NSW. She then represented Australia at the Mia International World Cup in Portugal. Girl knows how to move.

Her passion for movement and performance has grounded her artistic practice in circus arts, and recently performed in Wildhouse Circus in Party Pooper.



Kathryn O'Keeffe

Performer

Kathryn O'Keeffe is a diverse performer with a background in circus, dance and physical theatre. Kathryn completed a Bachelor of Dance at the Victorian College of the Arts (VCA) in Melbourne, Australia. From 2005-2011, Kathryn performed with companies including Strange Fruit, Liquid Skin, Strut n Fret, Blue Circus, Phunktional and as a resident aerialist for the 2010 World Expo in Shanghai, China. Kathryn was also a founding member of Melbourne based dance company Rogue Collective. In 2011 Kathryn joined Circa as an acrobatic ensemble member with the show Nocturne premiering in South Korea, before continuing to perform in over 30 productions including Circa, Wunderkammer, S, Beyond, Wolfgang's Magical Musical Circus, Shaun the Sheep's Circus Show, Leviathan, Humans 2.0, Peepshow, On by Circa, Beethoven 9 and Eternity. Since leaving Circa in 2024 Kathryn has had the pleasure of working with Arc Circus, Sway and Highwire Entertainment where she is currently in development with their new show Primal.



Paul O'Keeffe

Performer

Paul O'Keeffe started touring the world in 1996 at age 16 playing one of the lead roles in Company Skylark's Wake Baby. Culminating after 230 shows and 2 years of touring to perform on 42nd Street, Broadway New York. Since then, he has toured all around the world countless times performing in circus, dance, puppetry, musical and physical theatre. He has worked and performed for some of the most world renowned companies including: Circa Contemporary Circus, Circus Oz, Circus Monoxide, Kronik, Strut & Fret Production House, The Australian Choreographic Centre, Jigsaw Theatre Company, Out Of the Blue Studios, Malcom C Cooke & Associates and Legs On The Wall. He has performed for world class festivals, venues and organisations including Brooklyn Academy of Music - New York USA. The Lincoln Centre - New York USA. The New Victory Theatre 42nd Street, New York USA. Nuits de Fourvière Festival- Lyon, France. Festival Internazionale di Villa Adriana - Italy. St Olav's Festival, Nidaros Cathedral - Trondheim, Norway. Sziget Festival - Budapest, Hungary. The Barbican Centre - London, England. The Chamäleon - Berlin, Germany. Tohu - Montreal, Canada. Sydney Opera House - Australia Paul dabbled in On-Screen work where he was an acrobatic extra in the Stan streaming service produced Christmas movie, Christmas on the Farm. Off stage, Paul co-founded circus company Kronik, set up a professional circus training studio in Melbourne, co-managed Warehouse Circus and ran independent circus troupes.

HIGHWIRE REVIEWS



THE UPSIDE NEWS 2020



THE CLOTHESLINE 2020



PLAYSTOSEE 2019



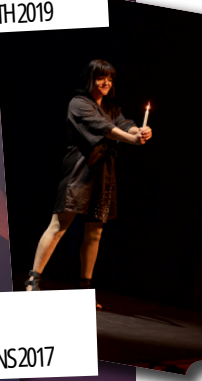
ED FEST MAGAZINE 2019



DIVA MAGAZINE 2019



OUT IN PERTH 2019



SMUT BUTTONS 2017



THE ADVERTISER 2020



THE DAILY MAIL 2019

THE WEE REVIEW 2019

HI-FWAY 2018

"The performance is so high energy, so passionate and executed with such abandon that it can't help but leave you feeling elated and empowered."

"if you aren't turned on by this you might want to consult a physician, because you're probably clinically dead"

SMUT BUTTONS 2017

"70 minutes was nowhere near the amount of time I wanted to spend in this psycho-sexual wonderland. We may only be halfway through Fringe World, but I am afraid that Rouge has pretty much ruined every show I have ever seen/will see until the day I die."

"Rouge plays with sex, sexuality, gender and relationships and pushes boundaries way beyond the physical feats shown on stage. What really made this show stand out though was the pure, unadulterated joy that came from every single performer."

OUT IN PERTH 2017

'One badass sizzler of a show.'

DAILY MAIL (UK)

'Packed with constant surprises'

PLAYSTOSEE (UK)

'a sexy, slick celebration and empowering spectacle'

ED FEST MAGAZINE

"Rouge redefines what circus is and should be. Rouge is probably the circus that Cirque du Soleil wishes it was"

THE WEE REVIEW 2019

"charismatic, captivating and enthralling"

"breathtaking, astonishing and flamboyant production"

CLOTHESLINE.COM.AU

"Exploding with energy and performers full of joy, this was a luxurious wanton bath in naughtiness. Totally shameless and indulgent, I defy anyone not to gasp in shock and awe in equal measure."

"Thunderous applause and a standing ovation followed this outstanding show. And the joy of being gloriously alive shone from the faces of all the performers"

"Gender fluid, supremely sexy and very tongue in cheek – this highly inclusive show is impish and delightful."

DIVA MAGAZINE

"A kids' circus this is not – it is an exhilarating, sexy, funny and highly entertaining adults-only show."

THE ADVERTISER

"Rouge delights and tantalises its audience – displaying feats of human strength and skill... but again, falls back heavily on its poignant point of difference to any other physical theatre production baring a soulful honesty and reverent tenderness in regards to human relationships, love, human connection and sexuality."

"Rouge is a sexy, operatic (and acrobatic) cabaret that is filled with affection. The performances (and the performers) are big, bold and demanding of your attention and I believe it's entirely warranted."

THE UPSIDE NEWS

"it is the acts that combine humour, sensuality, and circus that make Rouge remarkable"

"Rouge's performers are talented, fierce, and unabashed."

GLAMADELAIDE

GETTING TECHNICAL



NUMBER IN TOURING PARTY:

7 People



SHOW RUN TIME:



65 minutes

(60 minute version available) *Intermission can be included in a 75 minute version as well.

BUMP IN / OUT

- Bump in: 5-10 hours depending on technical elements (please contact to discuss)
- Bump out: 1 hour

TYPES OF VENUES

PRIMAL is able to be adapted to suit a range of spaces including Spiegel tents, proscenium arch theatres and pop up venues.

MINIMUM DIMENSIONS

PRIMAL is adaptable to a range of spaces. For the work to be staged in full, Sauter has minimum requirements. If your venue cannot meet any of these requirements it may be possible to alter or remove a small number of routines to allow for the work to proceed. Minimum required for the full show: 7m high x 5m wide x 5m deep

RIGGING

PRIMAL has aerial routines as part of the show, all on a single point that is lowered in and out during the show. The trained performers and Technical Manager carry out all the mid-show rigging. There is an Australian Standard qualified rigger as part of the touring party/ If suitable rigging is not available at the venue, the aerial acts can be omitted from the show. This will reduce the show runtime to 60 minutes.

FIRE

There is a fire act in the show. If the venue is unable to accommodate fire, this act can be omitted from the performance. A full risk assessment, Safe Working Method Statement and other safety documentation is available on request.

STAFF

PRIMAL requires separate lighting and sound operators for the show provided by the venue. LX will be required for the full bump in and rehearsal period. Sound Operator will be required for sound check and rehearsal. If performing aerials and the venue does not already have suitable rigging points in place a venue staff member is required to work with the company riggers during bump in to install the rigging. PRIMAL tours with a Technical Manager who will plot the lights for the show and will act as Stage Manager for the performance.

TECHNICAL REQUIREMENTS Sound:

- Mixing desk
- Mac laptop or desktop with qlab for playback (please advise if you are unable to provide)
- FOH PA system + amps suitable for the space
- On stage monitors/ 2 x fold back wedges
- 1 x Sennheiser belt pack & receiver
- 1 x hand held radio mic & receiver
- All appropriate leads

Lighting:

Generic touring LX design will be available as a guide as a pre-rig is required for PRIMAL. The show will utilise a standard lighting rig available in most venues with additional specials. However to ensure that the design isn't compromised we require the following as a minimum:

- LED wash fixtures (ideally moving head with zoom capability) to create full stage wash
- 2 x Moving head spot profiles (ideally 4 x moving heads however the show can work with 2).
- warm & cold front wash
- 1 x Hazer & fluid

Note: We can do a version of the show without moving heads but this requires a larger number of conventional lights to be pre-rigged. Please advise the production manager as soon as possible if this is the case.

PRIMAL

COMPANY

Highwire Entertainment
102a Spring Street
Reservoir, VIC, 3073

DIRECTOR & PRODUCER

Elena Kirschbaum
elena@highwire.com.au
+61407267239

TOUR BOOKINGS & MANAGEMENT

Natalie Friija
touring@highwire.com.au

www.highwire.com.au

