



PLAYLAB THEATRE

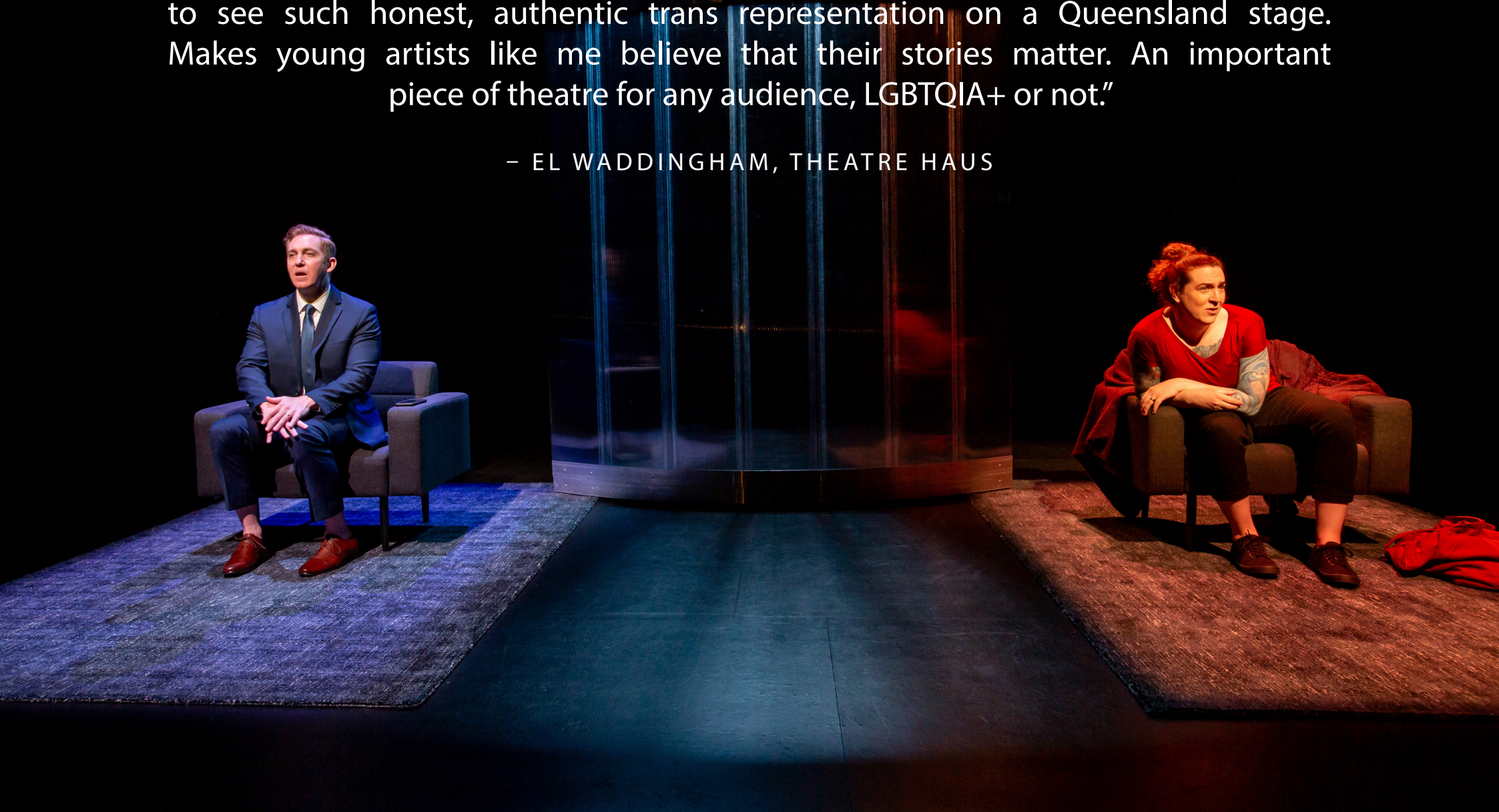
UNCONDITIONAL

BY SEÁN DOWLING & CAMERON HURRY

PRESENTERS PACK

"Playlab has brought together an electric combination of multidisciplinary artists to create a piece reflects what Brisbane artists are truly capable of executing. It was all at once painful and beautiful. It is so profoundly heartening to see such honest, authentic trans representation on a Queensland stage. Makes young artists like me believe that their stories matter. An important piece of theatre for any audience, LGBTQIA+ or not."

- EL WADDINGHAM, THEATRE HAUS



CONTENTS

About Playlab Theatre	5
Unconditional by Seán Dowling & Cameron Hurry	7
Production Specifics	8
Marketing	9
Digital Assets	9
Print Assets	9
Show Copy	10
Quotes & Reviews	10
Audience Engagement	11
Workshops	11
Technical Specifications	14
Example Schedule	14
Staging	15
Lighting	15
Sound	15
Wardrobe	15
Freight Notes	15
Cost Estimates	16
Contact Details	17
Appendix	18
Appendix A: Setting Plan	18
Appendix B: LX Plan	19
Appendix C: LX Magic Sheet	20
Appendix D: Speaker Plan	21

Production Photography by Stephen Henry | Rehearsal Photography by Bella Webb





"Unconditional probes deeply...
powerful and frequently funny."

— NICK DENT, BRISBANE TIMES



Playlab Theatre is a Brisbane-based, multi award-winning theatre company that seeks to challenge perspectives of Australian Culture through Australian Theatre. As a new-writing theatre, we privilege making high quality, adventurous work that speaks to the diversity and politics of contemporary Australia and appeals to audiences across the country seeking work of substance.



AUSTRALIAN THEATRE AUSTRALIAN CULTURE

With playwrights at the centre of the creative process, we provide a nuanced, but rigorous pathway to develop a work from inception to rehearsal readiness and to reach its potential, before producing and publishing the work for audiences to engage with. At any given time we have at least three commissioned works on the slate, undergoing development, each aimed at bringing under explored stories to a wide range of audiences.

More information on Playlab Theatre can be found here: playlabtheatre.com.au

Based on a touching lived experience of a trans woman, *Unconditional* by Seán Dowling and Cameron Hurry is a play that needs to be seen by the LGBTIQ+ community, their allies and wider audience by being programmed into your venue and/or season.



THE PRODUCTION

INFORMATION

ARTFORM	Text-based Theatre
STYLE/GENRE	Realism, Theatre for Social Comment
THEME	Gender Identity, Self-Acceptance, Love, Transformation/Change

CREATIVES



DIRECTOR
Brian Lucas



DRAMATURG
Ian Lawson



LIGHTING DESIGNER
David Walters



SOUND DESIGNER
Brady Watkins



DESIGNER
Bill Haycock

CAST



SHE
Seán Dowling



HE
Cameron Hurry





UNCONDITIONAL

BY SEÁN DOWLING & CAMERON HURRY

Two men.
They flirt. They dance.
They fall in love.

House. Dog. Coffee machine. Joint bank accounts.
Work. Routine. Drift. Crisis.

Intimate, poetic and de-centering, *Unconditional* weaves a compelling tapestry of a queer relationship between a man who identifies as gay and a person whose identity evolves during their marriage... starting as "he", but now transitioning to "she", which destabilises their union, their belief systems, and their politics.

Each playwright writes for one character in subjective monologue, duelling monologue and dialogue. Told with humour, insight and absolute honesty, *Unconditional* re-examines and re-defines the nature of love and what we tell ourselves we would accept. Is love really unconditional? Or does it have conditions like everything else?

PRODUCTION SPECIFICS

DURATION

90 minutes, no interval.

CONTENT WARNING

Contains adult themes, nudity, coarse language, sexual references, conversations around transitioning/gender dysphoria, and mentions of suicide.

PRESENTING LINE

A Playlab Theatre production presented in partnership with [venue name].

MANDATORY ACKNOWLEDGEMENT

The following acknowledgment text must be included on all materials.

A Playlab Theatre Production in partnership with [venue name]. Playlab Theatre and this project is supported by Queensland Government through Arts Queensland. This project has also been supported by the Creative Sparks Fund which is a partnership between the Queensland Government and Brisbane City Council to support local arts and culture in Brisbane.

SUITABLE VENUES

Unconditional by Seán Dowling and Cameron Hurry is best suitable to a black box or proscenium arch venue with a lighting rig. The audience capacity can be anywhere between 40-300.

MAXIMUM NUMBER OF
PERFORMANCES PER WEEK
6-8 performances

MINIMUM BREAK
BETWEEN PERFORMANCES
240 minutes

TOURING AVAILABILITY
Unconditional by Seán Dowling and Cameron Hurry is available for touring from 2024-2025.

TOURING PERSONNEL
The touring party consists of 3 people.

NAME	ROLE
Seán Dowling	She
Cameron Hurry	He
TBC	Stage Manager

Please contact marketing@playlabtheatre.com.au to coordinate updated headshots and biographies of casts and creatives.

FOR ALL MEDIA ENQUIRIES PLEASE CONTACT
Marketing Coordinator
marketing@playlabtheatre.com.au



MARKETING

SUMMARY

A comprehensive library of digital and physical assets including marketing collateral, templates, production shots, promotional images, artist interviews and video footage, will be shared with our presenting partners.

Please note that all marketing materials including print (posters, flyers, press advertising), broadcast and digital (website, emails) require approval before being published or sent to print. Approvals should be sent to marketing@playlabtheatre.com.au. Please allow for minimum 2 business days turn around on all approvals.

DIGITAL & PRINT ASSETS

These are sample digital and print assets from Unconditional's 2023 Brisbane Season. Please contact marketing@playlabtheatre.com.au to coordinate updated marketing materials.

AVAILABLE ASSETS



Production Sizzle Real
[>>LINK](#)



Digital Assets
[>>LINK](#)



Media Release
[>>LINK](#)



Text Assets
[>>LINK](#)



MARKETING

SHOW COPY

ONE LINER

Love never dies, it just transforms.

SHORT SYNOPSIS

What happens when someone decides to begin a gender transition without telling their partner? What does it mean when a “gold-star-gay” faces the reality that his spouse is a woman? Told with humour, insight, and absolute honesty, *Unconditional* by Seán Dowling and Cameron Hurry is an intimate insight into the complexity of love and the difficulties of transitioning later in life. Based on a touching account of the lived experience of a trans woman, this is a play not to be missed.

EXTENDED SYNOPSIS

What happens when someone decides to begin a gender transition without telling their partner? What does it mean when a “gold-star-gay” faces the reality that his spouse is a woman? Told as duelling monologues, parallel conversations with a couple’s therapist, *Unconditional* by Seán Dowling and Cameron Hurry unpicks the image we hold of ourselves and shows us the fraying edges of Australia’s Queer culture.

In a time when Trans people are made into abstract concepts and theoretical objects whose rights are determined by legislation – *Unconditional* by Seán Dowling and Cameron Hurry is a rejection of speeches in parliament, a challenge to the ignorance inside Queer communities, and a touching account of the lived experience of a trans woman. This is a play not to be missed, and a story sorely needed in our theatres.



MARKETING

MEDIA QUOTES

"Playlab has brought together an electric combination of multidisciplinary artists to create a piece reflects what Brisbane artists are truly capable of executing. It was all at once painful and beautiful. It is so profoundly heartening to see such honest, authentic trans representation on a Queensland stage. Makes young artists like me believe that their stories matter. An important piece of theatre for any audience, LGBTQIA+ or not."

EL WADDINGHAM, THEATRE HAUS

"I cannot praise this work enough... nothing short of exceptional...a must-see."

BRIDIE MIDDLETON, STAGE DOOR PODCAST

"[Unconditional] was incredible...such an emotional and raw show, and I loved every second of it."

ALEXANDRA MURRAY, THEATRICAL ALEX

"...an intimate journey, poetic at times, but also incredibly honest."

MEREDITH WALKER, BLUE CURTAINS

"A rich portrait... told with raw emotion and sharp wit."

ELISE LAWRENCE, LIMELIGHT MAGAZINE

"Unconditional probes deeply... powerful and frequently funny."

NICK DENT, BRISBANE TIMES



AUDIENCE RESPONSE

"I have never been more blown away by a play and I absolutely mean it. I laughed, I cried, and I truly believe there is something everyone can take away from this show. The entire team had me in the palm of their hands the entire time. I have never left a show feeling more educated. I am so grateful I got to witness such an incredible piece of theatre. You would be doing yourself a massive disservice missing this one."

MEG HARGRAVES

"Absolutely stellar show that was raw, well directed and brilliantly acted by both performers."

"Excellent production. Moving script and great acting"

"Beautiful story...very clever."

AUDIENCE ENGAGEMENT

OVERVIEW

Audience engagement activities and products can be arranged through Playlab Theatre including: post-performance discussions, hardcopy publications, workshops and artist interviews.

WORKSHOPS

The creatives can deliver online or in-person acting or playwriting workshops. The workshops are suitable for community and creative arts groups and can be tailored to beginners, intermediate or experienced participants. Please contact the Producer at production@playlabtheatre.com.au to discuss options and costs.

POST-PERFORMANCE DISCUSSIONS

Post-performance discussions enable the audience to engage with the actors and ask questions about the show and acting in general. Post-performance discussions are suitable for the general audience. To arrange a post-performance discussion, please contact the Producer at production@playlabtheatre.com.au.

PUBLICATION

Playlab Theatre has a catalogue of QueerTheatre that can complement this work. The Unconditional script or any of our QueerTheatre publications can be offered on consignment for sale in the foyer. Please contact Playlab Theatre to discuss further.





"A rich portrait...told with raw emotion and sharp wit."

– ELISE LAWRENCE, LIMELIGHT MAGAZINE



TECHNICAL SPECIFICATIONS

TECHNICAL SUMMARY

The following section outlines the technical requirements and support to be provided by the touring company and by the venue. Sites and circumstances may differ and we welcome suggestions or solutions from venues. Playlab Theatre welcomes the opportunity to discuss this directly.

EXAMPLE SCHEDULE

Pre-rig lights and audio recommended to expediate the bump in schedule.

TECHNICAL PERSONNEL	PRODUCTION SCHEDULE
DAY 1	
1x SND/AV	Rig LX
3x LX	Set install
2x MX	LX Focus
	Sound install
	Sound Focus and Checks
	Tech Plot
DAY 2	
1x SND/AV	Tech/Dress Rehearsal
1x LX	BREAK
	Show

CREW REQUIRED FROM VENUE

Venue to supply:

BUMP IN/BUMP OUT
2x Mech
3x LX
1x SND/AV
SHOW
1x LX/SND/AV Technician (Sound Operator)

PERSONNEL REQUIRED FROM PLAYLAB THEATRE

Playlab Theatre to supply:

TOURING
2x Performer
1x Stage Manager (Sound Operator and Calling Show)

TECHNICAL SPECIFICATIONS

STAGING

The set is designed to fit within a proscenium arch or black box style theatre with the audience in front of the stage.

Performance Floor Area

6m W x 7m D (see Appendix A: Setting Plan)

Playlab Theatre to supply

- 2 x grey arm chairs
- 2 x medium grey/blue rugs (sized 190 x 280 cm) 1 x large grey/blue rug (sized 230 x 320cm)
- Frosted 7 panel plastic wall. The wall is transported in pieces to be assembled.
- Props (bag, tissues, shoes, pills, water bottle, scarves, hairclip, hair ties, shawl and iPhone in case).

SOUND

The sound design utilises four speakers rigged overhead, two subs and two monitors positioned upstage and a left and a right pair of monitors on the floor (see Appendix E: Audio Plan).

Playlab Theatre supplied Sound Equipment

- 1 x Macbook Pro running QLAB 5
- All master audio files and cues

Venue supplied Lighting Equipment

- 4 x Meyer UPJ-1P
- 2 x Meyer USW-1P
- 4 x Martin Audio LE100
- All appropriate patching, cabling, isolated power and drivers

LIGHTING

Booms and overhead rig can be pre-rigged, patched, coloured and flashed out prior to full company arrival (see Appendix B: LX Plan).

Playlab Theatre supplied Lighting Equipment

- Lighting Plan
- MacBook Pro running QLAB 5 and show files.
- 4 x ACME XA-400 spot (at additional cost)

Venue supplied Lighting Equipment

- 4 x ACME XA-400 spot (option to be supplied by Playlab Theatre) or equivalent
- moving spots
- 12 x 25-50° Colour Source or equivalent spots
- 4 x Acme Aurora wash
- 10 x Rush PAR 2 9channel
- 33 x 25-50° Source Four J or equivalent
- 1 x Selecon Rama 1.2K Fresnel
- 4 x Iris
- 2 x booms (Boom heights to centre of lens)
- Top hats on all profiles on the booms (if possible)
- Gels as per lighting plan (see Appendix C: LX Magic Sheet)
- Consumables (electrical tape, gaff, etc.)
- 1x ETC ION XE20 2K or an equivalent 48 channel board capable of controlling moving lights (x4) and Rush PARs

WARDROBE

Playlab Theatre to supply for SHE

- 1 x Red T-shirt Dress
- 1 x Black canvas sandshoes
- 1 x Burgundy scarf
- 1 x Black Skinny Jeans
- 1 x Burgundy cardigan
- 1 x Black ballet flats
- 1 x Bonds bra and underwear
- 1 x Black hair tie
- 1 x Silver and gold plain wedding band

Playlab Theatre to supply for HE

- 1 x Blue suit pants and jacket
- 1 x White business shirt with blue checked lines
- 1 x Blue tie
- 1 x Brown dress shoes
- 1 x Brown belt
- 1 x "Invisible" black socks
- 1 x Plain gold wedding band

Venue to supply for Actors

- 2 x Dressing Room
- Costume rack and coat hangers
- Access to showers, toilet, drinking water
- Sufficient backstage lighting, tables, chairs, bins, mirrors

FREIGHT NOTES

For a tour within Australia the set can be transported in a van with an internal length of 2.5m. Truck hire and driver will need to be included in touring costs. Access to a loading dock is required.

COST ESTIMATES

REMOUNT COST

AUD \$17,021

Please note that the remount costs will be significantly reduced if the production is programmed before or after our March or July 2025 production.

WEEKLY COST

AUD \$7,160

Please note that this production is available as a weekly hire only.

ROYALTIES

14%

NB: This budget does not include touring costs such as freight, touring allowance, accommodation, and travel costs.



CONTACT

PRODUCER CONTACT

Playlab Theatre

(07) 3220 2763

info@playlabtheatre.com.au

MARKETING CONTACT

(07) 3220 2763

marketing@playlabtheatre.com.au

WEBSITE & SOCIALS



playlabtheatre.com.au



[@playlabtheatre](https://www.facebook.com/playlabtheatre)



[@playlab_theatre](https://www.instagram.com/playlab_theatre)

OFFICE LOCATION

King George Chambers,
156 Roma Street, Brisbane City
QLD 4000

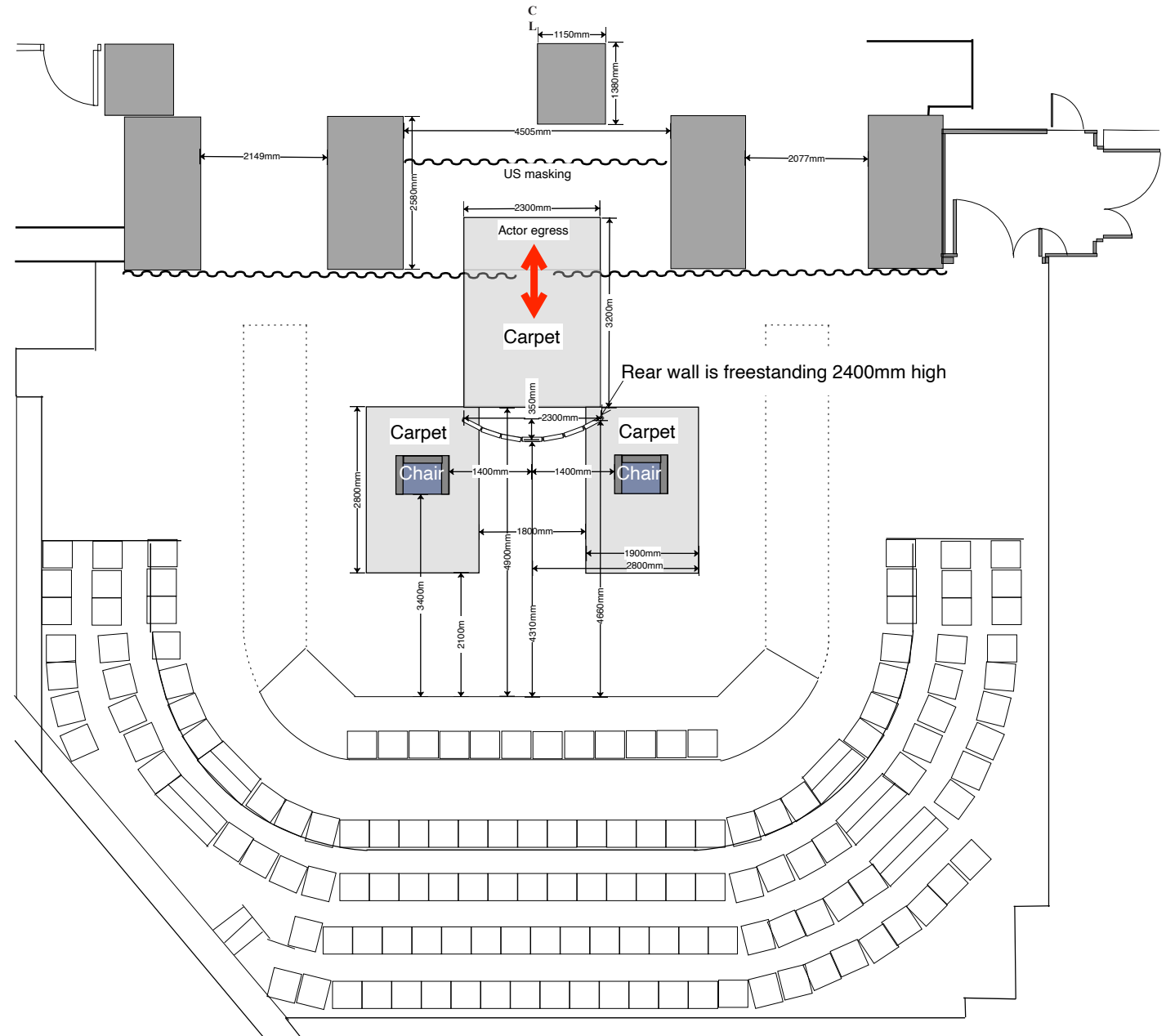
POSTAL ADDRESS

PO Box 3701
South Brisbane,
Brisbane City, QLD 4101



APPENDICES

APPENDIX A - SET PLAN



The plans for Unconditional included in this pack are specific to the Underground Theatre at Brisbane Powerhouse. Please note these plans are not to scale, please contact us to discuss the specifics of your venue and/or to access the actual plans on: production@playlabtheatre.com.au.

APPENDIX B A- LX PLAN



APPENDICES

APPENDIX C - LX CUES

CUE NO.	PAGE	TIME	Foll On	CUE DESCRIPTION	ACME SPOT	ACME WASH	LED colour source
PRESET: Check boom focus. Blackout check.							
1	...	10\10		HOUSE AND WARMERS - Carpets and screen			Carpet & screen
2	...	7\7		FOH CLEARANCE - HOUSE out and reduce state for Acknowledgent			"
3	2	8\8		OSC SOUND Q - DBO with music			Out
4	2	12\12		OSC SOUND Q - Fade up crosslight on dancing US of screen			US carpet?
5	2	5\12		VIS Q - <i>He turns to enter</i> - Add OP carpet + OP wall + US FOH/lose US 305\5s			OP
6	2	3\3		VIS Q - <i>He arrives</i> - Complete naturalistic OP state/lode US			✗
7	2	3\5		TEXT Q - " <i>One moment</i> " - Complete naturalistic OP state			✓
8	2	7\7		TEXT Q - " <i>Off course...</i> " - Add low naturalistic state PS (mirror) for her. Pick her up in mover USOP	102✓5s		✓
9	2	3\3 + 2		VIS Q - <i>He moves</i> - Boost OP chair FOH/lose US of OP chair. Follow her to PS chair.	Follow to chair	204✓	✗
10	2	7\7		VIS Q - <i>He sits</i> - Focus OP chair FOH and balance PS	"	"	✗
11	2	5\5		VIS Q - <i>She sits</i> - Balance her on arm of chair	102 2s focus chair	✓	✗
12	2	2\5		TEXT Q - " <i>...back on track...</i> " - Transfer to Naturalistic state on PS for her on arm of chair/he is backlit	Out	OUT	✗
13	2	2\5		VIS Q - <i>She sits</i> - Focus her in PS chair			✗
14	2	1\2 +0.5		TEXT Q - " <i>...how long...</i> " - Ping pong to him			✗
15	2	1\2 +0.5		TEXT Q - " <i>That's my truth</i> " - Ping pong to her			✗
16	3	1\2 +0.5		TEXT Q - " <i>...feels fucking fabulous</i> " - Ping pong to him (love)			✗
17	3	1\2 +0.5		TEXT Q - " <i>...and no secrets.</i> " - Ping pong to her			✗
18	4	1\2 +0.5		TEXT Q - " <i>...falling love...</i> " - Ping pong to him (gender reveal)			✗
19	4	1\2 +0.5		TEXT Q - " <i>...congratulations...</i> " - Ping pong to her			✗
20	5	1\2 +0.5		TEXT Q - <i>I'm the cunt.</i> - Ping pong to him			✗
21	5	1\2 +0.5		TEXT Q - " <i>Respectful.</i> " - Ping pong to her			✗
22	6	1\2 +0.5		TEXT Q - " <i>...and it will be fine.</i> " - Ping pong to him			✗
23	6	1\2 +0.5		TEXT Q - " <i>...secret from my partner.</i> " - Ping pong to her (angry)			✗
24	7	1\2 +0.5		TEXT Q - " <i>...c from K-mart.</i> " - Ping pong to him (Vaginas)			✗
25	7	2\2 +1		TEXT Q - " <i>...penis stays or not.</i> " - Ping pong to her			✗
26	8	2\6 +1		TEXT Q - " <i>...trans person...</i> " - Ping pong to him/her state changes 304 & 312\3s			✗
27	8	2\6 +1		TEXT Q - " <i>...one that's disrespectful</i> " - Ping pong to her/his state changes 303 & 311\2s			✗
28	9	2\4 +1		TEXT Q - " <i>...upgrade to Penios Dehave</i> " - Ping pong to him			✗
29	10	2\4 +1		TEXT Q - " <i>...not going to be...</i> " - Ping pong to her			✗
29.5	11	12\12		TEXT Q - " <i>...fucking deliberate.</i> " - Boost him for slo-mo	101✓		
29.8	11	7\7		VIS Q - <i>He sits back</i> - Return	Out		
30	11	3\4 +2	6	TEXT Q - " <i>...hesitate to be</i> " - Ping pong to lush him and tight her for rainbow sequence	104✓	201 & 203✓	✗

APPENDICES

APPENDIX D - MAGIC

UNCONDITIONAL – MAGIC PLAYLAB & BRISFEST @ UNDERGROUND AUG/SEPT 2023

GROUP 1

1	FOH warm to AA1
2	FOH warm to AA2
3	FOH warm to AA3
4	FOH warm to AA4
5	FOH warm to AA5
6	FOH warm to AA6
7	FOH warm to AA7
8	FOH warm to AA8
9	FOH warm to AA9

GROUP 2

11	FOH cool to AA1
12	FOH cool to AA2
13	FOH cool to AA3
14	FOH cool to AA4
15	FOH cool to AA5
16	FOH cool to AA6
17	FOH cool to AA7
18	FOH cool to AA8
19	FOH cool to AA9

21	OP face special US
22	OP face special US
23	PS face special US
24	PS face special US
25	FOH to US of OP chair
26	FOH to US of PS chair
27	Transformation special
28	Transformation special
29	Transformation special backlight

50	Sidelight to behind screen
51	Sidelight to behind screen

101	ACME -XA 400 special OP
102	ACME -XA 400 special PS
103	ACME -XA 400 special OP
104	ACME -XA 400 special PS

31.8.2023

201	Aurora wash OP
202	Aurora wash FOH
203	Aurora wash FOH
204	Aurora wash PS

301	LED FOH to OP chair
302	LED FOH to PS chair
303	LED downlight to OP carpet
304	LED downlight to PS carpet
305	LED downlight to US carpet
306	LED backlight to PS screen
307	LED backlight to CS screen
308	LED backlight to OP screen
309	LED Backlight to OP chair
310	LED Backlight to PS chair
311	LED frontlight to OP carpet
312	LED frontlight to PS carpet

GROUP 40

401	Rush PAR oolour wash
402	Rush PAR oolour wash
403	Rush PAR oolour wash
404	Rush PAR oolour wash
405	Rush PAR oolour wash
406	Rush PAR oolour wash

GROUP 41

407	Rush PAR sunset key
408	Rush PAR sunset key
409	Rush PAR sunset key
410	Rush PAR sunset key

555	PS Auslan speical
556	OP Auslan speical

APPENDICES

APPENDIX E - AUDIO PLAN

